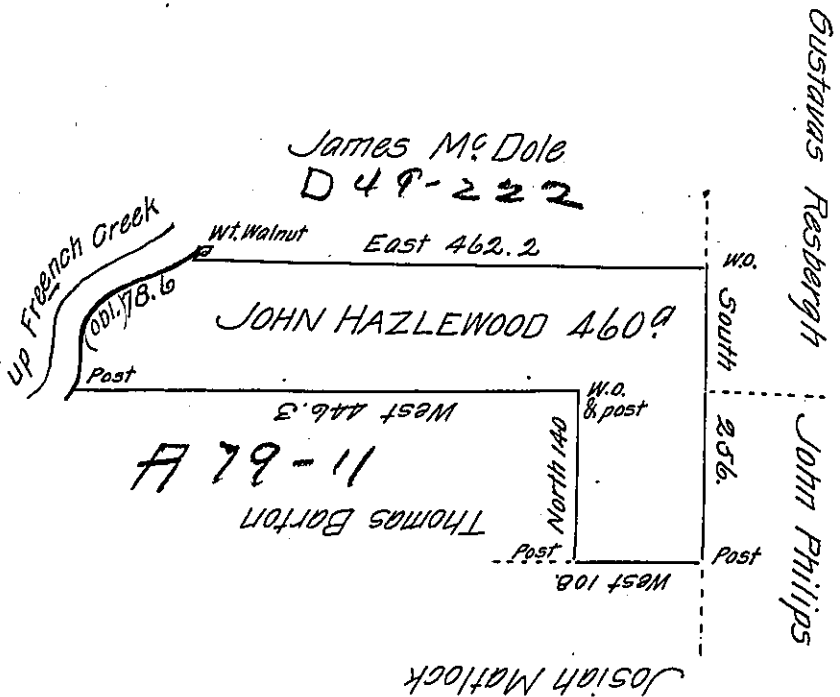


River Courses
 N 2 1/2° E 76.6
 N 30° E 20
 N 74° E 82
P^s 178.6



Situate on and adjoining the East Side of French Creek in Allegheny County Containing 460.9
 and Allowance of Six P Cent for Roads & C. Surveyed 12th Day of Nov. 1794. In purs-
 uance of a Warrant dated the 13th Day of April 1792.

Wth Power D.Y.S.

To Danl. Brodhead Esq. }
 Surveyor General. }

IN TESTIMONY that the above is a copy of the original remaining on file in
 the Department of Internal Affairs of Pennsylvania, made
 conformably to an Act of Assembly approved the 16th day of
 February, 1833, I have hereunto set my Hand and caused
 the Seal of said Department to be affixed at Harrisburg,
 this Sixth day of March 1905.

George R. Benson
 Secretary of Internal Affairs